

Check Out Our Library Activities

Book clubs

Remembering Sessions at the CHEER Center

First State Improv

Weekly Story Time

Grab & Go Craft Kits

Art and Craft Classes for all ages

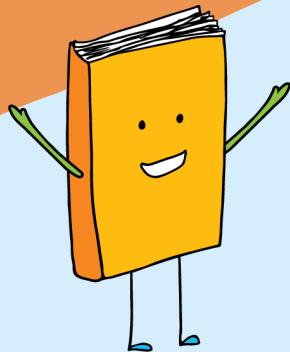
Lego Club for Kids

STEM Lab for Kids

Read to the Dogs

Movie showings for various ages

VISIT OUR WEBSITE TO VIEW AN UP TO DATE
CALENDAR OF LIBRARY PROGRAMS EACH
MONTH!



Rules & Regulations



Prolonged use of the library is for research and study only.

The library should be quiet so all patrons can concentrate.

No loitering or gathering in the library without purpose.

No smoking or eating permitted in library (covered drinks permissible)

Library staff has the right to ask anyone who will not abide by the rules to leave the library.

Telephones are for library business only.

Cell phones should be turned off in the library.

By observing these rules you can make your library a pleasant place for everyone.

All library events are subject to photography that may be used on social media, please see the photography and videography disclaimer posted in the library.

THANK YOU!
Greenwood Public Library...
working to serve your
information needs.



GREENWOOD PUBLIC LIBRARY

Hours:

Monday 10am - 6pm

Tuesday 10am - 7pm

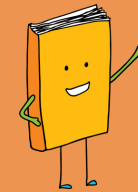
Wednesday 10am - 6pm

Thursday 10am - 6pm

Friday 10am - 5pm

Saturday 10am - 3pm

Sunday Closed



Phone: (302) 855-1242

Email: greenwood.library@lib.de.us

www.greenwood.lib.de.us

Find us on Facebook and Instagram!



Using your library card

YOU MAY CHECK OUT:

You must have your library card or photo ID to check out materials.

You may not check out materials when your fines exceed \$20.00.

You may have a maximum of 50 items checked out on your card at any one time and 25 of the items can be DVDs or Blu-rays.

Most items can be borrowed for 3 weeks. All Chromebooks, WiFi hotspots and Tonieboxes circulate for 1 week.

RETURNING MATERIALS:

Items may be returned to any Delaware Public Library except WiFi hotspots and Chromebooks.

HOLDS:

If an item is at another library or already in use, you may place a hold on it (reserve it) at the circulation desk or online.

You may have 99 pending holds at a time.

If an item is not at any Delaware library, you may also request items from out of state. Please make your request at the circulation desk or by phone. There is no charge for this service. There is a limit of 5 request per month.

OVERDUE CHARGES/ FINES:

All Items returned after their due date will be charged a fine of 25¢.



RENEWALS:

Items will automatically renew up to 3 times.

No item on hold for another person can be renewed.

Renewals are not permitted when your fines exceed \$20.00.

LOST/STOLEN/ DAMAGE LIBRARY CARD

The replacement library card fee is \$2.00.

LOST/ DAMAGE MATERIALS

You are liable for damaged or lost items.

Additionally, a \$1.00 processing fee will be added for each item that must be replaced.

DELAWARE LIBRARY CATALOG

To access the Delaware library catalog, please download the Delaware Library Catalog app - available in the Apple Store or Google Play, or visit www.lib.de.us



LIBRARY SERVICES

MEETING ROOMS:

Call or visit our website to schedule a free room for your nonprofit meetings.

COMPUTERS:

Must have your library card or photo ID to use a computer.

A user may not allow another person to access the Library Network by using his/her personal library barcode.

Maximum number of daily computer logins is three.

Patrons may have up to 3 hours a day of computer time if no one is waiting to use them.

You may not use computers when your fine exceeds \$20.00.

Printing Fees: 10 ¢ per black and white page and 25 ¢ per color page

Free Internet Access to use on your own device.



PHOTOCOPIES:

First 5 pages of library reference materials are free.

All other copies are 25 ¢ per page

Two- sided copy is charged as 2 copies.

FAX:

There is a charge of 25¢ per page to fax.



Laminating:

This service is offered for 50¢ per foot of material.